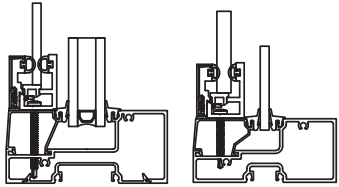
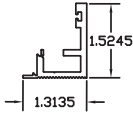
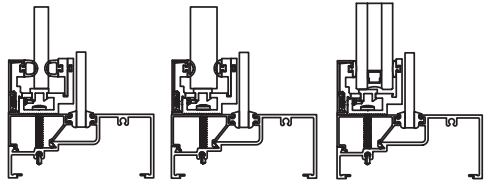
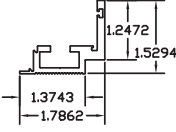
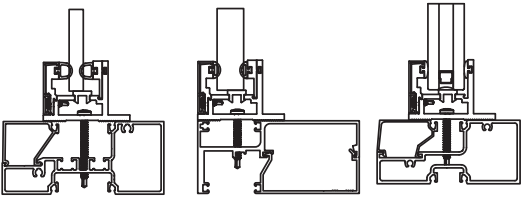
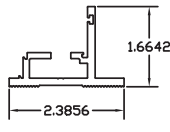
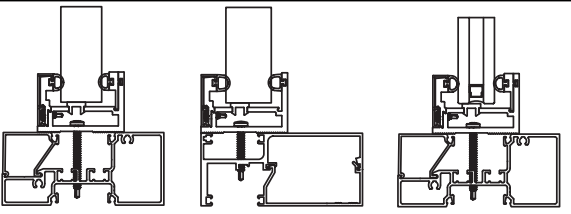
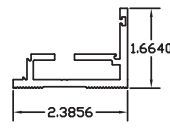
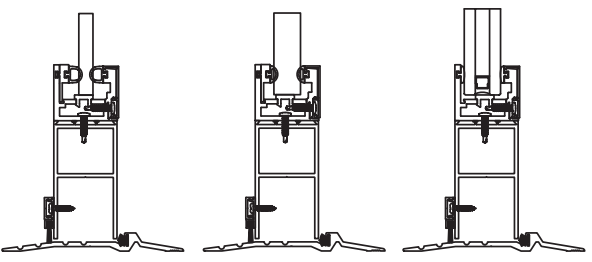
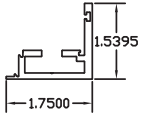


Condensed General Installation Guide

NOTE: Although this guide focuses on the Gen II overglazed systems, the material is applicable to all Gen II Storefront Security Products.

System Selection

Over-Glaze System	STANDARD			<p>The Gen II Over-Glaze system is installed in front of or behind a retail storefront. The “front-glaze” installation method can usually be performed during regular store hours with little interruption to normal store activity. An additional advantage is the system’s high resistance to water infiltration. Exterior overglazed Gen II installations add an additional layer of water shed to an already existing moisture-tight storefront.</p> <ul style="list-style-type: none"> Standard System Panels: AP25, AP375, and AP375BR HD System Panels: AP375, AP375BR, AP75BR, AP100BR, and AP375 1” IGU
	HEAVY-DUTY			
Conversion/New Construction	WIDE CONVERSION			<p>Riot Glass Gen II Storefront Conversion systems completely replace the existing storefront glass with high-impact polycarbonate infill panels. Each infill is fully framed with our heavy-duty aluminum extrusion nearly three times the thickness as a standard storefront. Choose this system for clients that want the ultimate in protection, elimination of breakable storefront glass on both exterior and interior, and the best visual clarity.</p> <ul style="list-style-type: none"> Wide Conversion Panels: AP375, AP375BR, AP75BR, AP100BR, and AP375 1” IGU Heavy-Glass Conversion Panels: RG4, RG4LS, RG5, RG6*, RG7*
	HEAVY-GLASS			
Aluminum Door Conversion				<p>Convert any aluminum-framed storefront door into a high-level security entrance door. Remove the existing glass and stops to install our new security panel system. Data shows that entrance doors are the primary target for the forced entries. Many times a failed forced entry attempt on a retail entrance door is enough to send the perpetrator on his way. Entrance Door Conversions should be part of every Riot Glass Installation.</p> <ul style="list-style-type: none"> Door Conversion Panels: AP375, AP375BR, AP75BR, AP100BR, and AP375 1” IGU

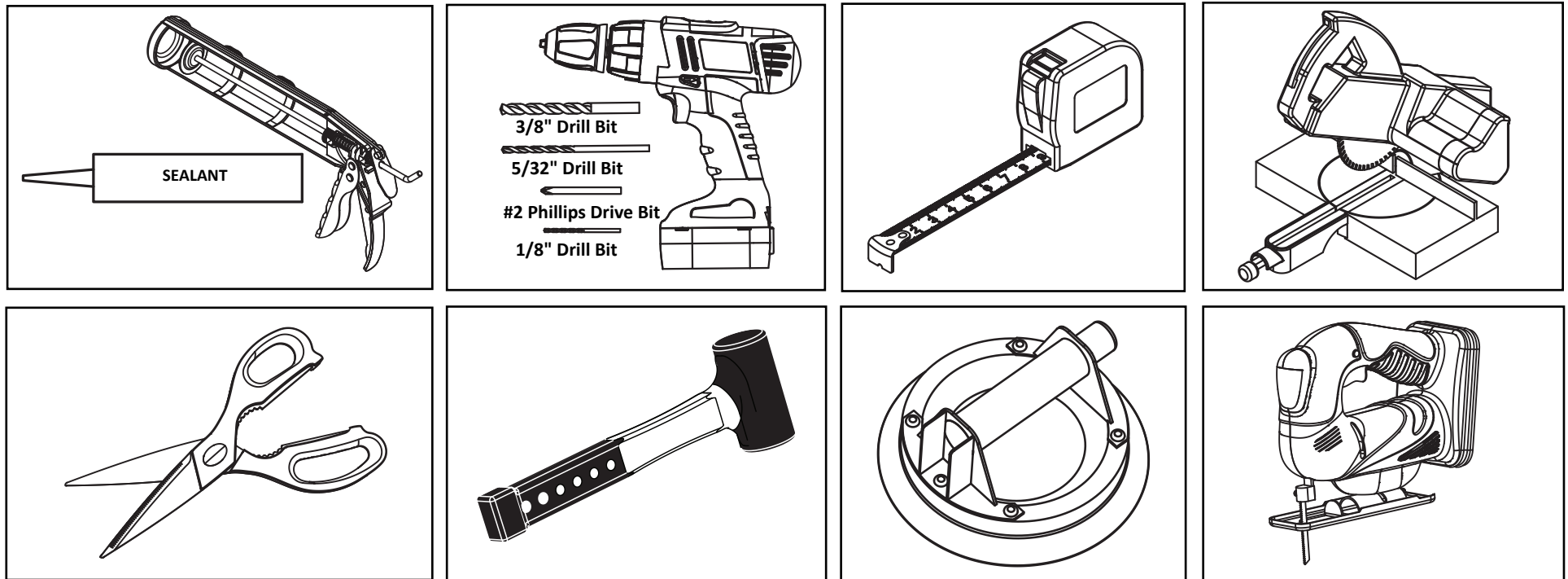
GEN II QUICK START INSTALLATION GUIDE



The Riot Glass Gen II AP Series Framing System is designed for easy installation. The diversity of the framing system makes Gen II adaptable to almost any commercial aluminum storefront and framed entrance door project with a minimal number of parts. Although previous glazing experience is preferred, it is not required in order to provide the customer with a top-rated security envelope with an eye-pleasing installation.

This guide is intended to assist the installer with general installation steps with detailed information available in our Installation and Training Guide. We highly recommend installers carefully review both documents before beginning installation.

Tools Required



Jobsite Material Storage Precautions

All aluminum materials delivered to job site must be stored in a dry and safe place, well removed from possible damage and covered until use. All polycarbonate panels must be protected from water, chemicals, and direct sunlight until installed. Remove protective liners immediately after installation. Prolonged sunlight exposure will negatively affect the safety liner adhesive and become very difficult to remove. Although polycarbonate is extremely durable it can be scratched, even through the liner, when in contact with sharp objects. Minimize the material storage time on the jobsite with all Riot Glass Gen II products,



GENERAL INSTALLATION

1

FRONT GLAZE OR BACK GLAZE

STEP 1: Verify with the shop drawings the type of over-glaze installation required. (Front or Back Glaze)

2

STEP 2: Measure the horizontal DLO (daylight opening) between the vertical storefront faces. Do not measure the gaskets.

3

SELECTION REQUIRED*

Base Extrusions

AP2-SF-HD-B-4 OR AP2-SF-STD-B-4

STEP 3: Optional base extrusions and corner joints compatible with over-glaze type installations. Verify selection with shop drawings.

Miter-Joint OR Butt-Joint

4

STEP 4: Cut the horizontal base extrusions to length. (Miter or Butt-Joint)

5 ALL GEN II PRODUCTS

STEP 5: Drill mounting holes. May be done at factory level. (Miter or Butt-Joint)

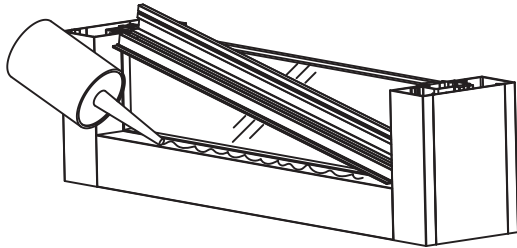
6 CONVERSION OPTIONS ONLY

STEP 6: Drill (2) - 3/8" bottom weep holes as shown above. Only conversions. Not required for over-glazed systems.

*Overglaze but-joint corners shown for illustration purposes. Miter-joint corners require similar steps.

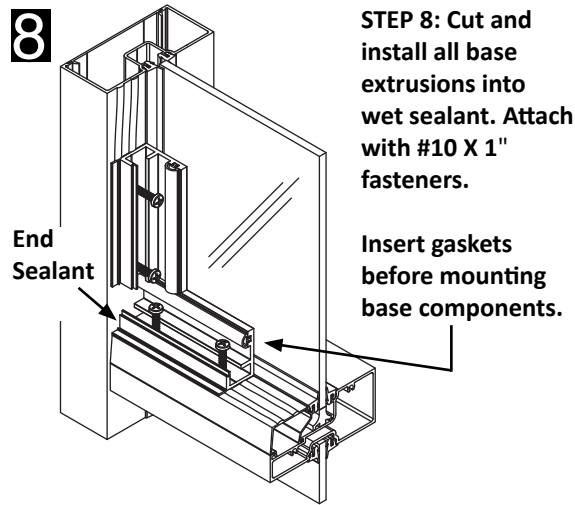
GENERAL INSTALLATION

7



STEP 7: Add sealant to storefront surface and press base into position.

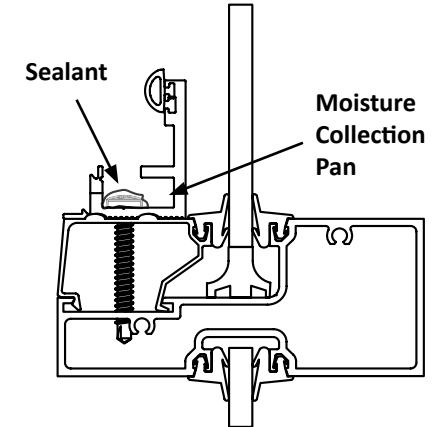
8



STEP 8: Cut and install all base extrusions into wet sealant. Attach with #10 X 1" fasteners.

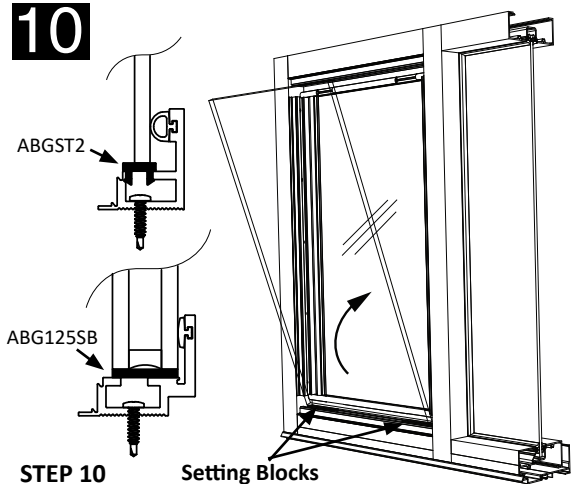
Insert gaskets before mounting base components.

9



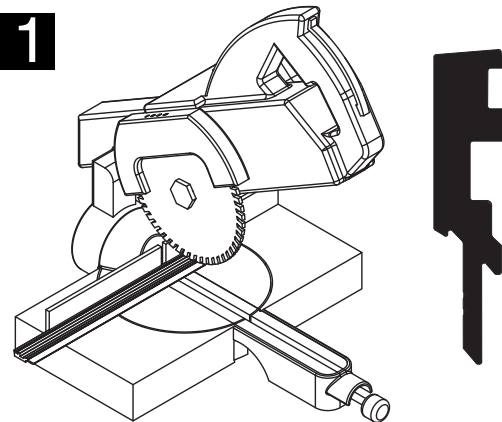
STEP 9: Seal all fasteners heads and mating ends to ensure a water-tight moisture collection pan.

10



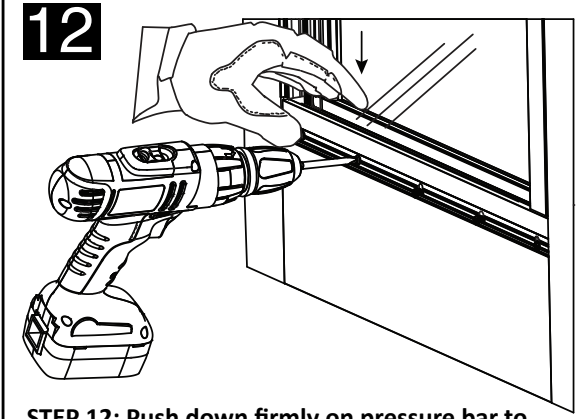
STEP 10 Setting Blocks

11



STEP 11: Cut pressure plates to the same dimensions as the corresponding base extrusions.

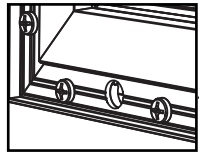
12



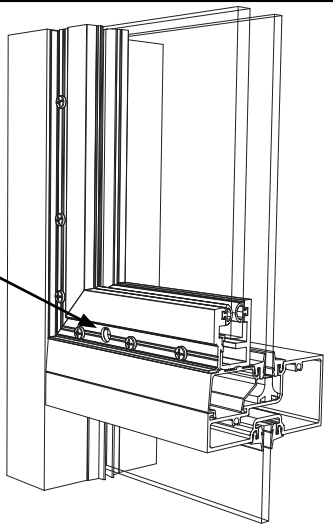
STEP 12: Push down firmly on pressure bar to seat and tighten fasteners on each end first, then work your way to the center.

GENERAL INSTALLATION

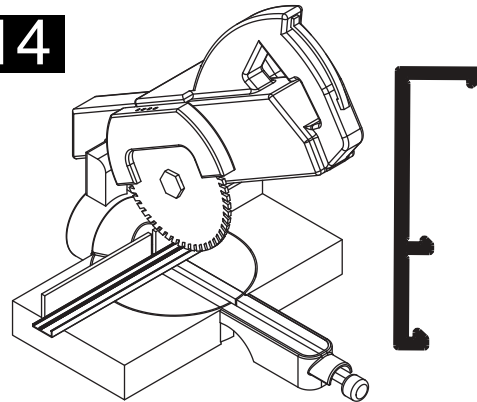
13



STEP 13: Drill 3/8" thru weep holes 2" from each end in the installed pressure bar. Over-Glaze Only.

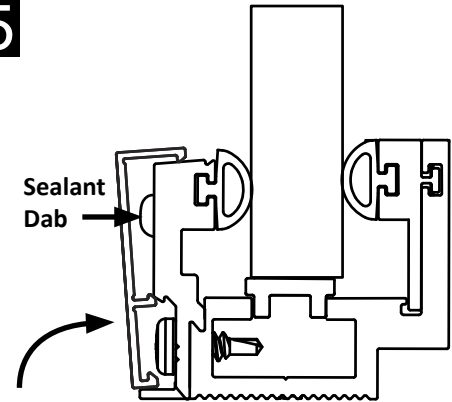


14

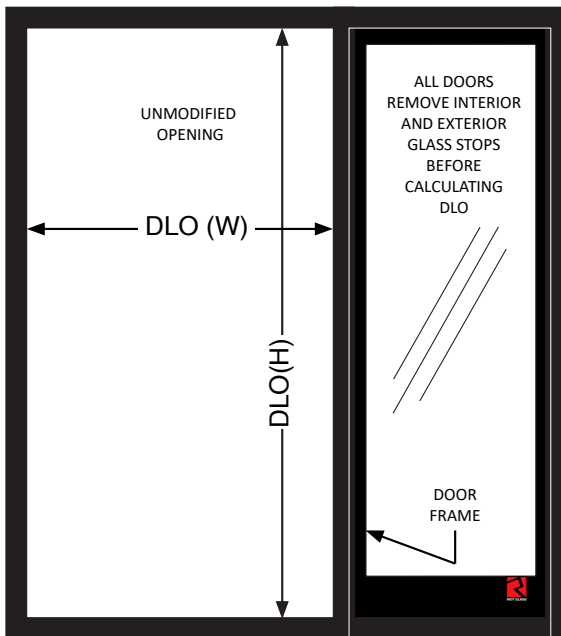


STEP 14: Cut the top and bottom horizontal caps to the full DLO. Butt-joints or miter-joints are finish-cut to the full horizontal DLO.

15



STEP 15: Place 1/4" dabs of silicone on each pressure bar every 10"- 12" when snapping the cover caps into place.



SECURITY PANEL CUT-SIZE TABLE

SYSTEM TYPE	CUT PANEL HEIGHT	CUT PANEL WIDTH
STD OVERGLAZE -AP2-STD -SF	DLO(H) - (1-5/8")	DLO(W) - (1-1/2")
HD OVERGLAZE - AP2-HD-SF	DLO(H) - (1-5/8")	DLO(W) - (1-1/2")
HD CONVERSION - AP2-SF-HD	DLO(H) - (1-7/8")	DLO(W) - (1-3/4")
HG CONVERSION - AP2-SF-HG	DLO(H) - (1-7/8")	DLO(W) - (1-3/4")
DOOR CONVERSION - AP2-DC	DLO(H) - (1-5/8")	DLO(W) - (1-1/2")